

BUSINESS AND INDUSTRY

EXPLORE YOUR FUTURE WITH THE FOUNDATION HIGH SCHOOL PROGRAM

Published by the Texas Workforce Commission

101 E. 15th St., Rm 0252, Austin TX 78778-0001

October 2016



**CAN YOU
IMAGINE
YOUR FACE
HERE?**

Figuring out what you want to do when you grow up is a challenge, but boy is it worth it! With the Foundation High School Program's endorsement options, you have the opportunity to explore classes and fields of study that interest you today so you can find your dream job tomorrow. In many of these courses, you will even get to experience what it's like to work in the jobs that interest you.

Remember: you have options, probably more than you have ever considered. If you want to work for someone else, or help operate a large corporation, you can become a Budget Analyst, or a Human Resources Manager, and someday maybe even a Chief Executive Officer. If you want to run your own businesses, you might pursue a career as a Real Estate Agent, Private Chef or Baker, or a Landscaping Architect, for example.

So go exploring! Research your endorsement and career interest options before deciding which paths to pursue. The decisions you make about your education today will affect how well you enjoy your job in the future, how much money you earn, your future lifestyle, and so much more. So think it through, plan your future, and have fun!

CONSTRUCTION MANAGER

Jobs projected in Texas by 2024:
45,030

You will need: a Bachelor's degree

Typical starting pay is:
\$54,431 a year

Typical average pay is:
\$93,609 a year

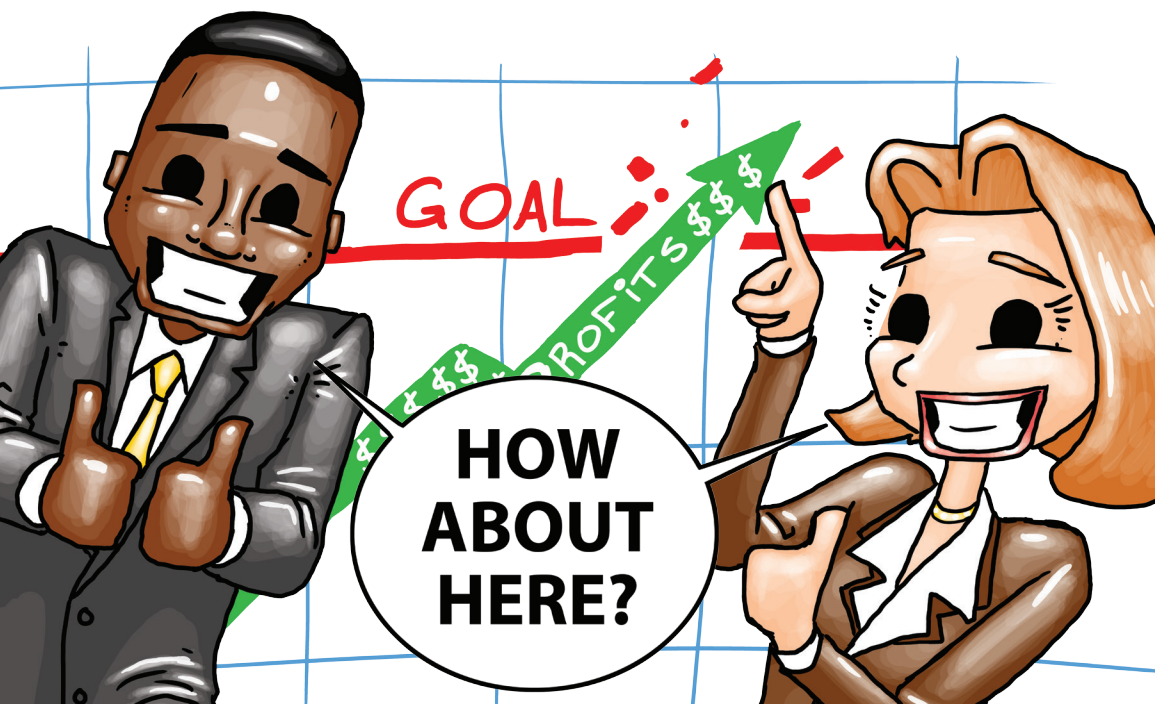
Turnover: Very Low

WHAT IS THE FOUNDATION HIGH SCHOOL PROGRAM?

The **Foundation High School Program** is a detailed plan of 22 credits that you and all your classmates will have to earn in order to graduate from high school. See page 4 for details.

An **endorsement** is an option you can add to your high school diploma to show your knowledge and/or skills gained in one of five broad subject matter areas: STEM, Arts and Humanities, Business and Industry, Public Services, and Multidisciplinary Studies. To get an endorsement, you must complete a logical sequence of specific courses approved by your district.

If you have questions about which endorsement would be best for you, talk to your school Counselor!



FINANCIAL MANAGER

*Jobs projected in Texas
by 2024: 31,970*

*You will need:
a Bachelor's Degree or
higher*

*Typical starting pay is:
\$80,673 a year*

*Typical average pay is:
\$145,202 a year*

Turnover: Very Low

So ... you think you might want to select the Business and Industry Foundation High School Program endorsement option? Awesome! Browse through some of the data for job titles found under the Business & Industry endorsement in this booklet to help you decide if this is the right educational and career path for you. For more information on jobs in this career field, you can:

1. Call our **24-hour Hotline at 1-800-822-PLAN (7526)**
2. Go to Texas Career Check and click "Explore Careers" at **www.texascareercheck.com**
3. Visit the LMCI website to see what available products may best serve your needs: **www.texasworkforce.org/labormarket**

We hope that by learning all you can about potential careers in the fields that interest you, you will be empowered to find a career that you love, and that also pays for you to live the way you want once you are living on your own. So enjoy this booklet, explore some options, and don't hesitate to talk to your parents, family, friends, teachers, counselors, and us at the Texas Workforce Commission if you have questions about your career goals.

**Business and Industry occupations can be found in all of the following
Achieve Texas career clusters.**



Sample Business and Industry Occupations by Emphasis

Below are sample occupations under the Business and Industry endorsement. Not all Business and Industry-related occupations are included here (there are hundreds), and some of those listed below may fall under other endorsements as well. Talk to your school Counselor for more information.

Architecture & Construction Career Cluster		
Architects	Construction Managers	Structural Iron & Steel Workers
Brickmasons	Drafters	Landscape Architects
Interior Designers	Electricians	Construction and Maintenance Painters
Carpenters	Extractions Workers	Pipelayers
Agriculture, Food & Natural Resources Career Cluster		
Agricultural Inspectors	Derrick Operators	Environmental Engineering Technicians
Agricultural Science Teachers	Fish & Game Wardens	Pest Control Workers
Animal Breeders	Log Graders and Scalers	Petroleum Technicians
Animal Scientists	Mining Machine Operators	Pump Operators
Business Management & Administration and Finance Career Clusters		
Accountants and Auditors	Business Teachers	Human Resources Managers
Actuaries	Chief Executives	Insurance Underwriters
Bill and Account Collectors	Claims Adjusters	Labor Relations Specialists
Bookkeeping Clerks	Executive Assistants	Medical and Health Service Managers
Hospitality & Tourism and Information Technology Career Clusters		
Web Developers	Concierges	Museum Technicians
Bakers	Database Administrators	Parking Lot Attendants
Cashiers	Food Service Managers	Set & Exhibit Designers
Chefs and Head Cooks	Hotel Desk Clerks	Tour Guides and Escorts
Manufacturing and Transportation, Distribution, & Logistics Career Clusters		
Air Traffic Controllers	Bus Drivers	Fiberglass Laminators
Aircraft Mechanics	Cabinetmakers	Machinists
Auto Body Repairers	Chemical Plant Operators	Model Makers, Plastic/Metal
Avionics Technicians	Dispatchers	Semiconductor Processors

Keep in Mind

The career titles listed above are just a fraction of the possible occupation opportunities available within this endorsement area, so be sure to visit TWC's AutoCoder website to find other job titles that may interest you: <http://autocoder.lmci.state.tx.us>.

- Just enter a job title or a description in the appropriate search box, and you will get a list of the most common title matches.
- Click on the title that best matches the job that interests you, and a catalog of other, closely-related (or interchangeable) job titles will appear.

Your Foundation High School Program Graduation Requirements

This table shows what every Texas student needs to graduate. Every student must earn the 22 credits under the “Foundation-Only” column. Your parents or guardians will need to give the school district written permission to allow you not to earn an endorsement. Otherwise you must pick an endorsement and earn 26 credits to graduate. Remember that your school district has the authority to establish requirements in addition to those listed here. Check with your school Counselor for more information.

Subjects and courses required for Foundation-Only Credits	Foundation-Only Credits	Foundation + Endorsement Credits	Distinguished Level Credits
English <ul style="list-style-type: none"> English I, II, and III Advanced English course 	4	4	4
Mathematics <ul style="list-style-type: none"> Algebra I Geometry Advanced Math course 	3	4 - All Foundation requirements, plus additional advanced Math course	4 - All Foundation requirements, plus Algebra II specifically
Science <ul style="list-style-type: none"> Biology Integrated Physics and Chemistry Advanced Science course 	3	4 - All Foundation requirements, plus additional advanced Science course	4 - All Foundation requirements, plus additional advanced Science course
Social Studies <ul style="list-style-type: none"> U.S. History U.S. Government (1/2 credit) Economics (1/2 credit) World History or Geography 	3	3	3
Physical Education	1	1	1
Languages other than English <ul style="list-style-type: none"> Two credits in the same language OR two credits from Computer Science I, II, and III 	2	2	2
Fine Arts	1	1	1
Electives <ul style="list-style-type: none"> Classes available for electives will be based upon the endorsement options selected by the student. 	5	7	7
Speech <ul style="list-style-type: none"> Demonstrated proficiency 	0	0	0
Total Credits	22	26	26

Students can earn one or more Performance Acknowledgments, in addition to any graduation program they follow, for any of the following areas: Dual Credit course; Advanced Placement or International Baccalaureate exam performance; Bilingualism and biliteracy; Earning a nationally or internationally recognized business or industry certification or license; PSAT, ACT-PLAN, SAT, or ACT score. Talk to your school Counselor for specific guidelines.

Your Business and Industry Endorsement Options

Students interested in earning the Business and Industry endorsement have several options. Once you've met your Foundation graduation requirements, you will need to successfully complete additional advanced courses in math and science (one each), plus electives, and choose **one** of the four options below to earn your remaining Business and Industry endorsement credits.

1. Complete consecutive levels [For example: **Principles of Business, Marketing and Finance** followed by **Business Management** or **Culinary Arts I** followed by **Culinary Arts II**] of four or more CTE (Career Technical Education) courses with the first two of them being from the same career cluster.
 - a. The third CTE credit must be from an advanced course
 - b. The fourth CTE credit must come from a class in one of the following career clusters:
 - **Agriculture, Food, & Natural Resources**
 - **Architecture & Construction**
 - **Arts, Audio/Video Technology, & Communications**
 - **Business Management & Administration**
 - **Transportation, Distribution, & Logistics**
 - **Marketing**
 - **Information Technology**
 - **Manufacturing**
 - **Hospitality & Tourism**
 - **Finance**
2. Complete four English elective credits by selecting three levels from one of the following areas:
 - a. **Advanced Broadcast Journalism**
 - b. **Advanced Journalism: Newspaper**
 - c. **Advanced Journalism: Yearbook**
 - d. **Public Speaking**
 - e. **Debate**
3. Complete four technology application courses from the following options:
 - a. **Digital Design and Media Production**
 - b. **Digital Art and Animation**
 - c. **3-D Modeling and Animation**
 - d. **Digital Communications in the 21st Century**
 - e. **Digital Video and Audio Design**
 - f. **Web Communications**
 - g. **Web Design**
 - h. **Web Game Development**
 - i. **Independent Study in Evolving/Emerging Technologies**
4. Complete four classes in consecutive levels from options 1 - 3.



PLUMBERS

Jobs projected in Texas by 2024:
46,930

You will need: High School diploma or equivalent, plus apprenticeship

Typical starting pay is:
\$29,180 a year

Typical average pay is:
\$45,634 a year

Turnover: Very Low

CHIEF EXECUTIVES

Jobs projected in Texas by 2024: 10,120

You will need:

a Bachelor's degree or higher, plus experience

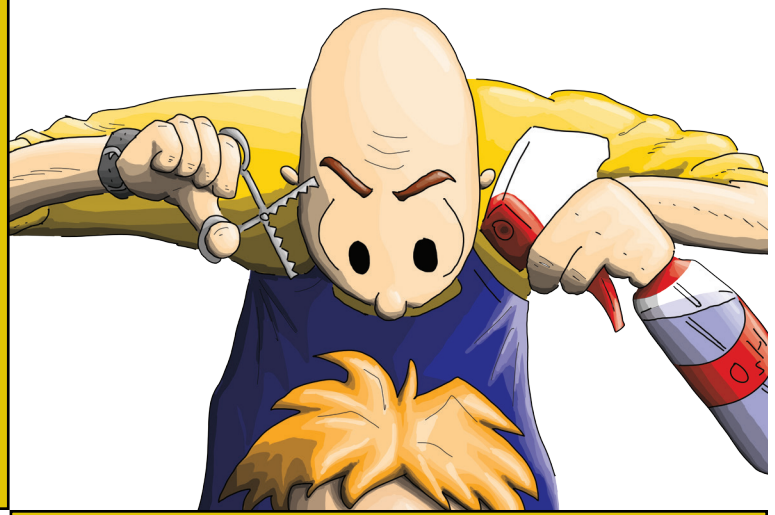
Typical starting pay is:

\$101,986 a year

Typical average pay is:

\$203,203 a year

Turnover: Low



COSMETOLOGIST

Jobs projected in Texas by 2024: 45,880

You will need:

Post-secondary vocational training

Typical starting pay is:

\$17,016 a year

Typical average pay is:

\$26,810 a year

Turnover: Low



**ANYWHERE
HERE?**

AIR TRAFFIC

CONTROLLER

Jobs projected in Texas by 2024: 2,230

You will need: An Associate degree, plus long-term on-the-job training

Typical starting pay is:

\$77,398 a year

Typical average pay is:

\$125,825 a year

Turnover: Average



The Real Deal

Using Labor Market Statistics to Filter through Career Options

It is important to think about how much money you'll earn in any given occupation. But you should consider many other labor market statistics to help you make informed choices.

Check out the information and numbers below for a few jobs in the Business and Industry fields to see other important statistics you can discover on the Texas Career Check website. Use this information to help you determine what's important to you in a career.

Automotive Service Technicians and Mechanics

You will: Diagnose, adjust, repair, or overhaul automotive vehicles.

- Formal automotive technician training is the best preparation.
- Automotive service technicians and mechanics must continually adapt to changing technology and repair techniques.

Projected state employment for 2024	61,120
Education needed:	Post-Secondary Training plus Credentials
2015 Average Annual Wage	\$41,444
Turnover:	Low

Administrative Assistants

You will: Perform routine clerical and administrative functions such as drafting correspondence, scheduling appointments, organizing and maintaining paper and electronic files, or providing information to callers.

- Opportunities should be best for applicants with extensive knowledge of computer software applications.

Projected state employment for 2024	220,870
Education needed:	High School Diploma plus Training
2015 Average Annual Wage	\$32,784
Turnover:	Very Low

Bakers

You will: Mix and bake ingredients to produce breads, rolls, cookies, cakes, pies, pastries, or other baked goods.

- Most workers in manual food processing jobs require little or no training prior to being hired. Excellent communications skills, curiosity, and attention to detail are highly desired traits.
- Highly skilled bakers should be in demand.

Projected state employment for 2024	15,170
Education needed:	Long Term on-the-job Training
2015 Average Annual Wage	\$23,802
Turnover:	Low

WELDER

Jobs projected in Texas by 2024: 63,820

You will need:

Post-Secondary Vocational Training

Typical starting pay is:

\$28,494 a year

Typical average pay is:

\$43,582 a year

Turnover: Low

**CAN YOU
IMAGINE
YOUR FACE
HERE?**

WANT INFORMATION ON MORE JOBS?

Check out
www.TexasCareerCheck.com
to learn about hundreds
more BUSINESS & INDUSTRY
careers!

EXPLORE YOUR FUTURE!



TEXAS WORKFORCE COMMISSION
Labor Market and Career Information
101 E. 15th St., Room 0252
Austin, TX 78778-0001
866-938-4444 toll free
Fax: 512-936-3208
www.texasrealitycheck.com
www.texasworkforce.org
email: lmci@twc.state.tx.us

Equal Opportunity Employer/Program. Auxiliary aids and services are available upon request to individuals with disabilities.
Relay Texas: 800-735-2989 (TTY) and 711 (Voice).

